

Session 2, 2025

Mon. Feb. 24th to Sat. April 19th
(7 week Session)

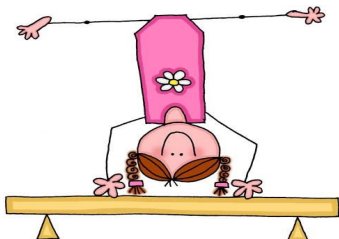
SPRING CAMP

Monday, March 24th—Friday, March 28th

7 WK 6 WK

(Pro-rated Presidents weekend—Saturday & Monday Classes)

45 min	1 x week	\$ 154	\$ 132
	2 x week	\$ 238	\$ 204
55 min	1 x week	\$ 175	\$ 150
	2 x week	\$ 280	\$ 240
	3 x week	\$ 336	\$ 288
1.5 hr	1 x week	\$ 224	\$ 192
	2 x week	\$ 350	\$ 300
	3 x week	\$ 420	\$ 360



USAG Monthly Rates

T E A M

SEE FRONT DESK

Private Lessons

(Paid in Cash to front desk prior to commencement)

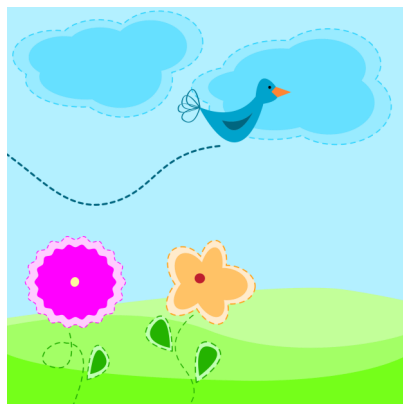
1 Student	\$ 80
2 Students	\$ 100
3 Students	\$ 120

Session 2 2025

Mon. Feb. 24th to
Sat. April 19th
(7 week Session)

SPRING CAMP

Monday, March 24th—Friday, March 28th



Reliant on enrollment numbers,
Class schedule is subject to change.

**COACHING ASSIGNMENTS
ARE SUBJECT TO CHANGE.**

Tel: 954-382-1767
WWW.WBGYMNASTICS.COM



SESSION 2

Mon. Feb. 24th to Sat. April 19th
(7 week Session)

SPRING CAMP

Monday, March 24th—Friday, March 28th

Registration \$ 50

(\$ 60/ Jan 1st through Dec. 31st, 2025)
REGISTRATION IS NON REFUNDABLE

REGISTRATION

Current students in the session have priority sign-ups during the 2nd to last week of a session. During the last week, registration is open to the public. Classes fill up quickly! Save your spot. Session and registration are pre-paid. We accept cash, Amex, Visa, Master and Discover cards. No payments will be taken over the phone. No spots will be saved without payment.

In Hurricane situations, WBGA follows Broward County Public School closures.

Admin Hours for Sign-ups:

Monday—Thursday 2:30pm-6:30pm.
Saturday 9:00-12:30

Tel: 954-382-1767
WWW.WBGYMNASTICS.COM

Session 2, 2025

Mon. Feb. 24th to Sat. April 19th
(7 week Session)

SPRING CAMP

Monday, March 24th—Friday, March 28th

PRE-SCHOOL PROGRAM

	MON	TUES	WED.	THUR	FRI.	SAT.
45 min Ind. 2/3		3:30	4:30	4:30		9:00
45 min 3/4 yrs		3:30 4:30	3:30 4:00	3:30 4:30		9:30A 9:30B 10:30 11:30
55 min 4/5 yrs	3:30 4:30	3:30 4:30 5:30	3:30 4:30	3:30 5:30		9:30 10:30 11:30

If your child needs assistance using the restroom, it is your responsibility to remain in the building during your child's class. Classes 2/3 & 3/4 yrs old.



409 SW 136th Avenue
Davie, Fl. 33325
www.wbgymnastics.com

**WE RESERVE THE RIGHT
TO REFUSE SERVICE.**

Session 2, 2025

Mon. Feb. 24th to Sat. April 19th
(7 week Session)

SPRING CAMP

Monday, March 24th—Friday, March 28th

Revised: 1/23/25

Developmental

	MON	TUE	WED	THU	FRI	SAT
Beginner 5-7 yrs 55 min	3:30A 3:30B 5:00 6:00	3:30A 3:30B 4:30 5:30	3:30 4:30 5:00 6:00	3:30A 3:30B 4:30A&B 5:30A 5:30B		9:30A 9:30B 10:30 11:30
Beginner 8+ yrs 55 min	4:30 5:30A 5:30B 6:00	4:30 5:30	5:30 6:00	4:30 5:30A 5:30B		10:30A 10:30B 11:30A 11:30B
Int Bronze 5-7 yrs. 1 hr 25min			4:30	3:30		10:00
Int Bronze 8+ yrs. 1 hr 25min	4:30 5:00	5:30	5:30	4:00 5:00		9:00
Silver 1 hr 25min	4:30 5:30		5:30	5:00		10:30A 10:30B
Advanced 1 hr 25min		4:30				10:30
PRE-TEAM 1 55 min	3:30		3:30		INVITE ONLY	
PRE-TEAM 2 1 hr 25min	3:30			3:30	INVITE ONLY	

Boys

	MON	TUE	WED	THU	FRI	SAT
BOYS 1 5+ 55 min	4:30			3:30		Johann 9:30
BOYS 2 8+ 55 min				5:30		11:30

2025 Registration

\$ 50

(Jan 1st through Dec. 31st, 2025)

CLASS/TUITION POLICIES:

Tuition and registration are **NON-REFUNDABLE** and **NON-TRANSFERABLE**.

DISCOUNTS & PRO-RATIONS:

10% sibling discount in same session on tuition.
New students may join any time during the session and will be pro-rated.

Make-ups must be made within the current session and must be scheduled 24 hours prior to the selected class. Make-up classes are limited to two (2) per session and are subject to available space.

There will be no rescheduling if your child does not show up/cancel the make-up.
You may switch a class you have signed-up for once during a session.

Class Drop off/Dismissal Procedures:

Only 1 parent per family of athlete permitted to enter lobby for viewing to safely maintain capacity limits.

Drop off: Front Entrance
(North side of Building)

Pick up: Double glass sliding doors on 136th
(East side of Building)

Coaches will return ALL athletes to a parent when the class is over at the East exit.

Class Attire & Necessities:

Athlete requires a water bottle and athletic attire. Hair must be tied back. No hoop earrings or dangling jewelry permitted during class.

Sandals/flip flops are preferred for athletes. They will be barefoot on the gym floor during class.

**WE ARE NOT RESPONSIBLE FOR
LOSS OF PERSONAL PROPERTY.**